



FOR LEASE
21 ROSZEL ROAD
PRINCETON, NEW JERSEY



9,543 SF FIRST FLOOR
DIVISIBLE DOUBLE-CORNER SUITE

BUILDING HIGHLIGHTS

- ▶ BUILT IN 2015
- ▶ PROMINENT MAIN LOBBY VISIBILITY
- ▶ EXTENSIVE WINDOW LINE
- ▶ INDUSTRIAL CHIC DESIGN
- ▶ "GRAB & GO CAFE" ON-SITE
- ▶ FITNESS CENTER



21 ROSZEL ROAD PRINCETON, NEW JERSEY

LOCATION HIGHLIGHTS

- ▶ QUICK ACCESS TO ROUTE 1 AND DOWNTOWN PRINCETON RESTAURANTS
- ▶ 1.5 MILES TO PRINCETON JUNCTION TRAIN STATION
- ▶ WALKING DISTANCE TO HYATT REGENCY HOTEL - CARNEGIE CENTER
- ▶ EASY ACCESS TO PRINCETON MARKET FAIR



SAB RUSSO

email: srusso@merceroak.com

office: 609.452.0200

cell: 609.472.0039

ZAC ANGLIN

email: zanglin@merceroak.com

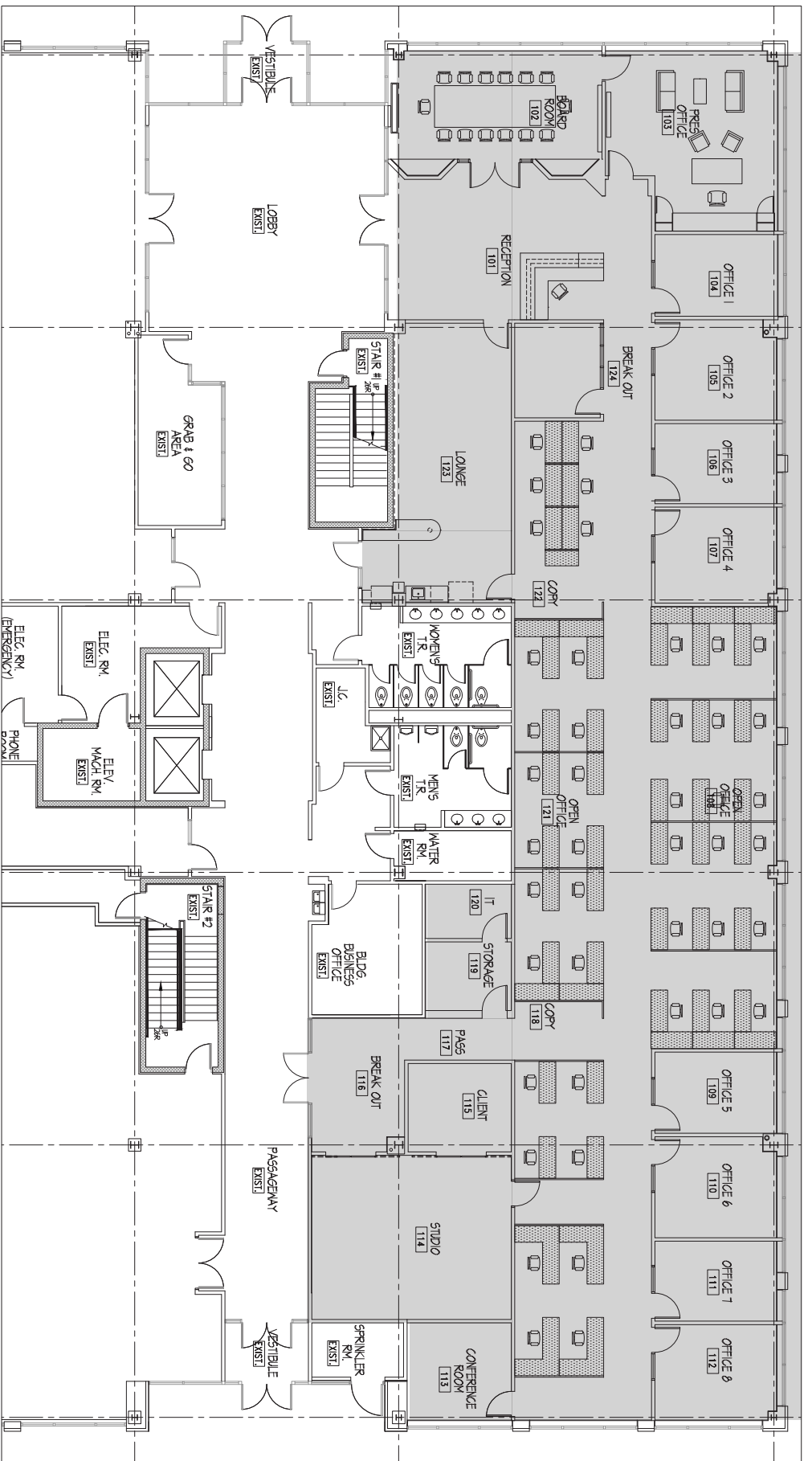
office: 609.452.0200

cell: 609.608.8080

200 PRINCETONSOUTH CORPORATE CENTER | SUITE 100 | EWING, NJ | 08628 | 609.452.0200 | MERCEROAK.COM

No warranty or representation, expressed or implied, is made as to the accuracy of the information contained herein, and same is submitted subject to errors, omissions, change of price, sale or other conditions and withdrawal without notice.





1ST FLOOR
 21 ROSZEL ROAD
 MARKETING PLAN #02
 27 JAN 20

